

# LAPCON DOOR DAMPER (RECESSED TYPE)



# LDD-V100

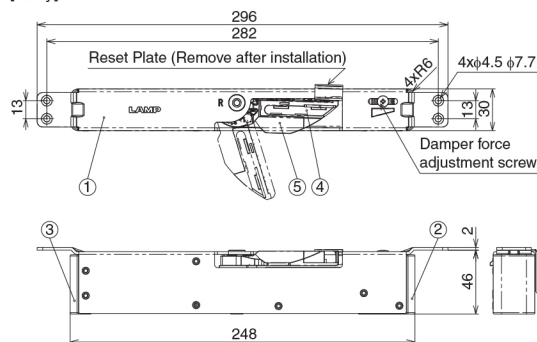


LDD-V100-NI-L shown.

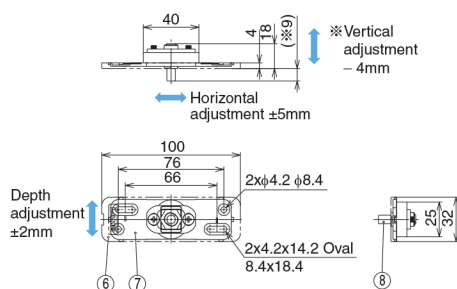


Counter plate cover (Nickel/Dark brown)

## [Body]

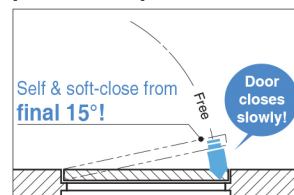


## [Counter Plate]

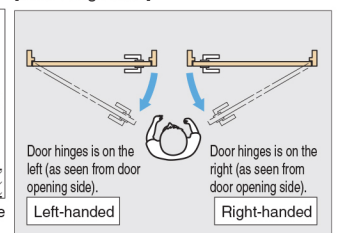


- Door damper unit for interior, swinging doors. Grips door at final 10° and softly, self-closes doors more gently compared to other door closers, putting less stress on the hinges.
- Heavy Duty: Holds up to 220lb doors (100kg).
- "Invisible" design minimizes visibility of the hardware.
- Can be adjusted for door weight after installation. Counterplate position can be easily adjusted by removing cover and turning micro-adjustment screws.
- Can be used with HES 3D-E190 and HES3D-160.
- Includes screws and paper template for installation.

## [Door Movement]

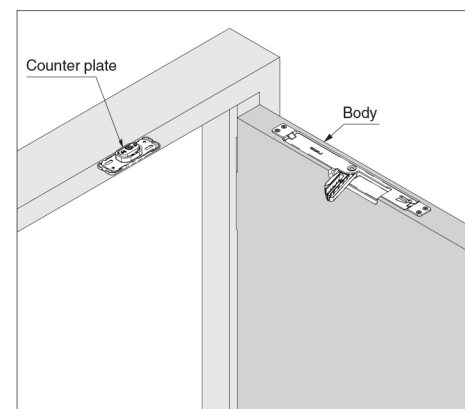


## [Door Hinge Side]



※Below drawing shows right-handed type. Left-handed type is symmetrical

## ●Installation



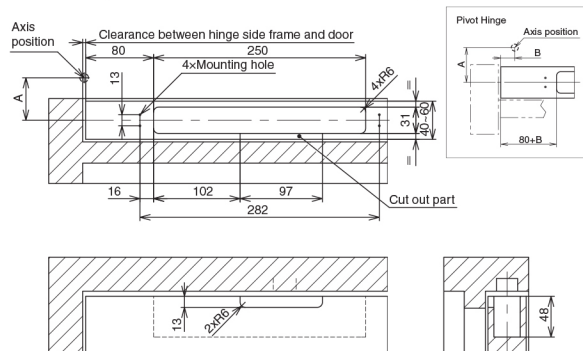
No.	Part Name	Material	Finish / Colour
①	Case	Steel (SPCC)	Nickel
②	Damper Base	POM	Grey
③	Spring Base	POM	Grey
④	Arm Cover	POM	Grey
⑤	Arm	Zinc Alloy (ZDC)	Nickel
⑥	Counter Plate Cover	ABS	Dark Brown/Nickel
⑦	Counter Plate Base	Zinc Alloy (ZDC)	—
⑧	Counter Plate Shaft	Steel (SUM)	Nickel

Item No.	Type	Door Weight(kg)	Door Width (mm)	Door Thickness (mm)	Box (pc)	Carton (pcs)
LDD-V100-R	Right	88lbs~220lbs (40~100kg)	Max. 35-7/16" (900)	1-9/16"~2-2/16" (40~60mm)	1	10
LDD-V100-L	Left					

1 / 16 Arrenway Drive, Albany, Auckland. Ph 09 476 4008 fax 09 476 4008 [www.uniquehardware.co.nz](http://www.uniquehardware.co.nz)

### [Cut Out Dimensions for Door]

LDD-V100-R (right-handed) shown. LDD-V100-L (left-handed) is symmetrical.



Dimension from frame to bore position of counter plate (mm)

Door Hinge	Clearance Between Hinge Side Frame and Door (mm)				
	1	2	3	4	5
HES3D-160, E190	217	218	219	220	221
Butt Hinge A=20~35	220	221	222	223	224
Pivot Hinge A=20~35	220+B	221+B	222+B	223+B	224+B
Pivot Hinge A=35~50	223+B	224+B	225+B	226+B	227+B

※If clearance between hinge side frame and door is beyond the range in the table above, calculate as per the table below.

Door Hinge	Dimension from Frame to Bore Position of Counter Plate (mm)	
HES3D-160, E190	216 + Clearance Between Hinge Side Frame and Door	
Butt Hinge A=20~35	219 + Clearance Between Hinge Side Frame and Door	
Pivot Hinge A=20~35	222 + Clearance Between Hinge Side Frame and Door	
Pivot Hinge A=35~50	219 + B + Clearance Between Hinge Side Frame and Door	
Pivot Hinge A=35~50	222 + B + Clearance Between Hinge Side Frame and Door	

### [Cut Out Dimensions for Frame]

LDD-V100-R (right-handed) shown. LDD-V100-L (left-handed) is symmetrical.

