



SLIDEMASTER

Bottom Roller Sliding System



SLIDEMASTER (SM) – Bottom Roller Sliding System

Slidemaster Single Rollers.

p/n SM9046PACK.

1 pair of Stainless steel 304 body and wheels rated to 160kg loading per pair, height adjustment up to 6mm (end screw). Single rollers tend to work better on narrow panels, for example Windows. Recommended for use on our SMRAIL Anodised aluminium bottom rail.



Slidemaster Tandem Rollers.

The SS7000 series is the latest edition of Stainless steel 304 rollers on offer for the timber door market. Built with high grade Stainless steel sealed precision bearings, these rollers are manufactured to go the distance. The improved design offers less rolling resistance which results in effortless operation. With all stainless components this product provides the ultimate corrosion resistance. Tandem rollers tend to work better on wider panels, for example Doors. Height adjustment up to 9.4mm (side screw), all tandem roller kits come with an adjustment screw white cap.

***10 year warranty for peace of mind.**

***The confidence of product testing to 50,000 cycles with a 200kg panel weight**



p/n SM7000160PACK.

1 pair with engineered Acetal outer wheels, rated to 160kg loading per pair. Recommended for use on our SMRAIL Anodised aluminium bottom rail.

***p/n SM7000200PACK.**

1 pair with Stainless Steel wheels rated to 200kg loading per pair. Recommended for use on our FTB Bronze Manganese bottom rail.

***Note.** Please contact us for hardware recommendations for panels over 200kg

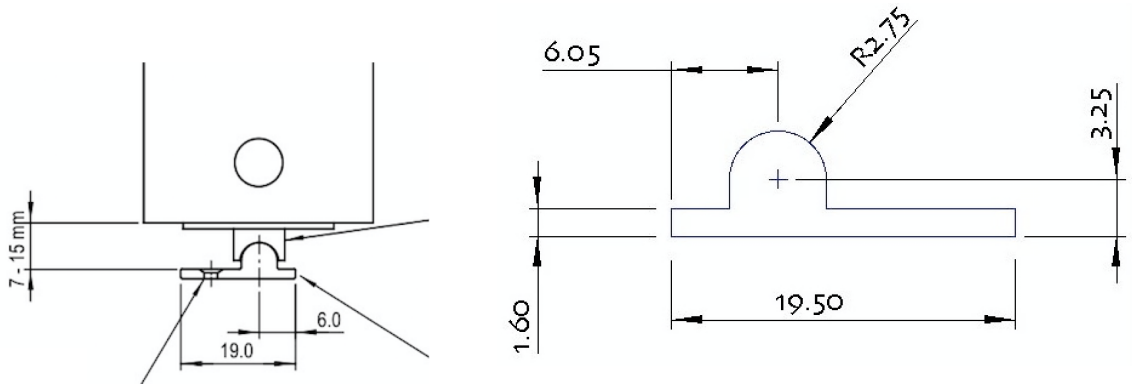
Bottom Rail.

p/n SMRAIL(Length)AL

T5 Anodised Aluminium rail, 160kg rated. Available in 2.5mtr or 5 metre lengths only

p/n FTB(Length)BR,

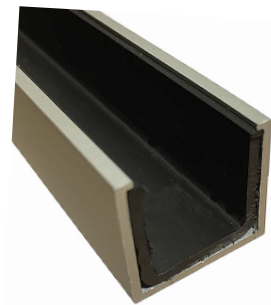
Bronze Manganese rail, 200kg rated. Available in 1.8mtr or 3.6 metre lengths only



Guide Channel c/w Polypropylene channel

p/n E22FCR(Length)N

Anodised aluminium, Available in 2, 2.7, 3, 4 & 5.7 metre lengths.



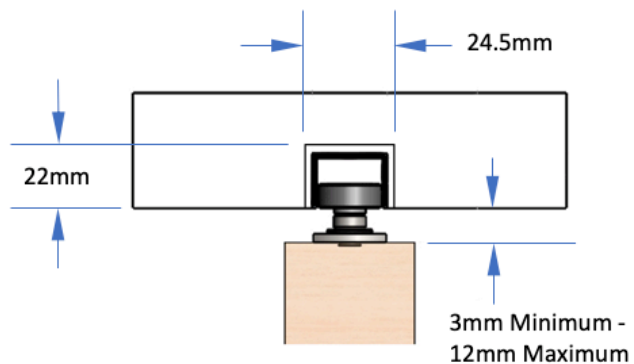
Guide (for use with E22FCR Guide Channel)

Use 2 rollers per panel (16mm diameter)

*Use the double roller version once panels exceed 1500mm wide.

p/n ATFGS16. Single roller, Stainless steel bearing

*p/n ATFGD16. Double roller, Stainless steel bearings.



Door / Window Interlocker / Collector Strip

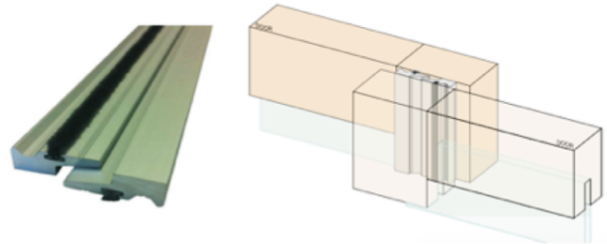
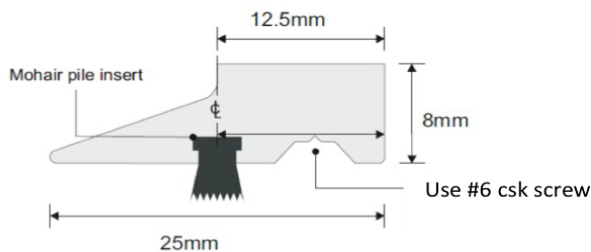
p/n SMINTERLOCK

Made from Anodised aluminium and sold in 3 metre lengths only.

Fits gap 10 – 12mm, use counter-sunk head screws #6 gauge

Used to pick up / carry a second, third panel etc along, plus draft exclusion when in the closed position (brush strip included)

When closed the interlocking wedges prevent doors or windows from being pulled apart which prevent unwanted opening and added security.



Brush Seal

p/n SCH-TS48

Brush lengths 5mm, 6.5mm & 7.5mm. Colours Grey (GR) or Black (BL). With & without Finseal

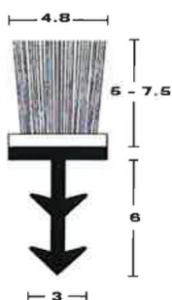
Note. For example, Door gap 4mm, use 5mm brush length (allows for brush contact but not too much pressure or possible rubbing noise e.g. on Finseal nylon insert brushes).

Brush Seal – Quantity required

Required on all sides of the “Frame” both inside and outside of door.

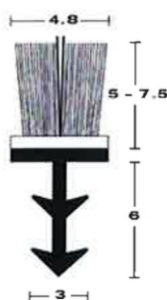
Quick calculation = Door width x 4 + door height x 4 (sold in 10 metre rolls ONLY)

Timber Kerf Seal

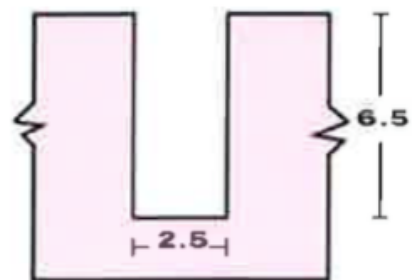


TS48 SERIES

Timber FINSEAL™



TSF48 SERIES



1 / 16 Arrenway Drive, Albany, Auckland. Ph 09 476 4008
www.uniquehardware.co.nz